



HENLEY ON HUDSON

AT PORT IMPERIAL
WEEHAWKEN, NEW JERSEY

TOWNHOME

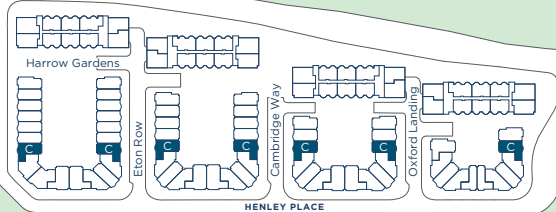
RESIDENCE C

Residence Features

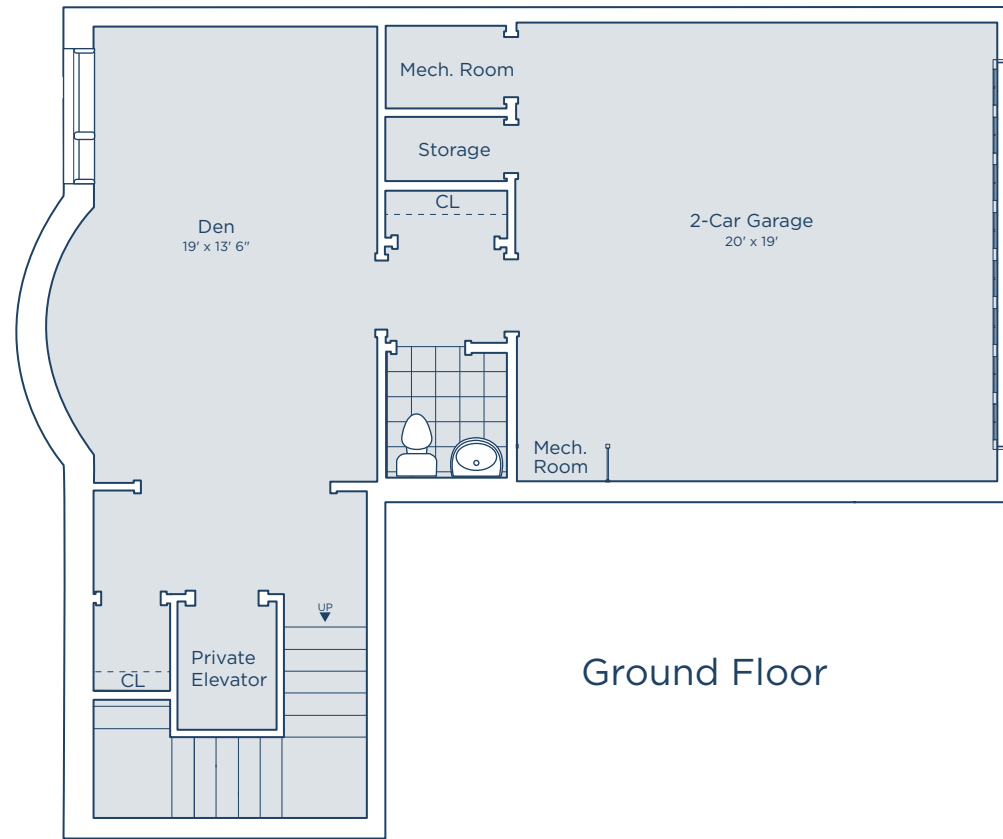
3,148 square feet

4 Bedroom Suites
4 Full Baths, 2 Powder Rooms

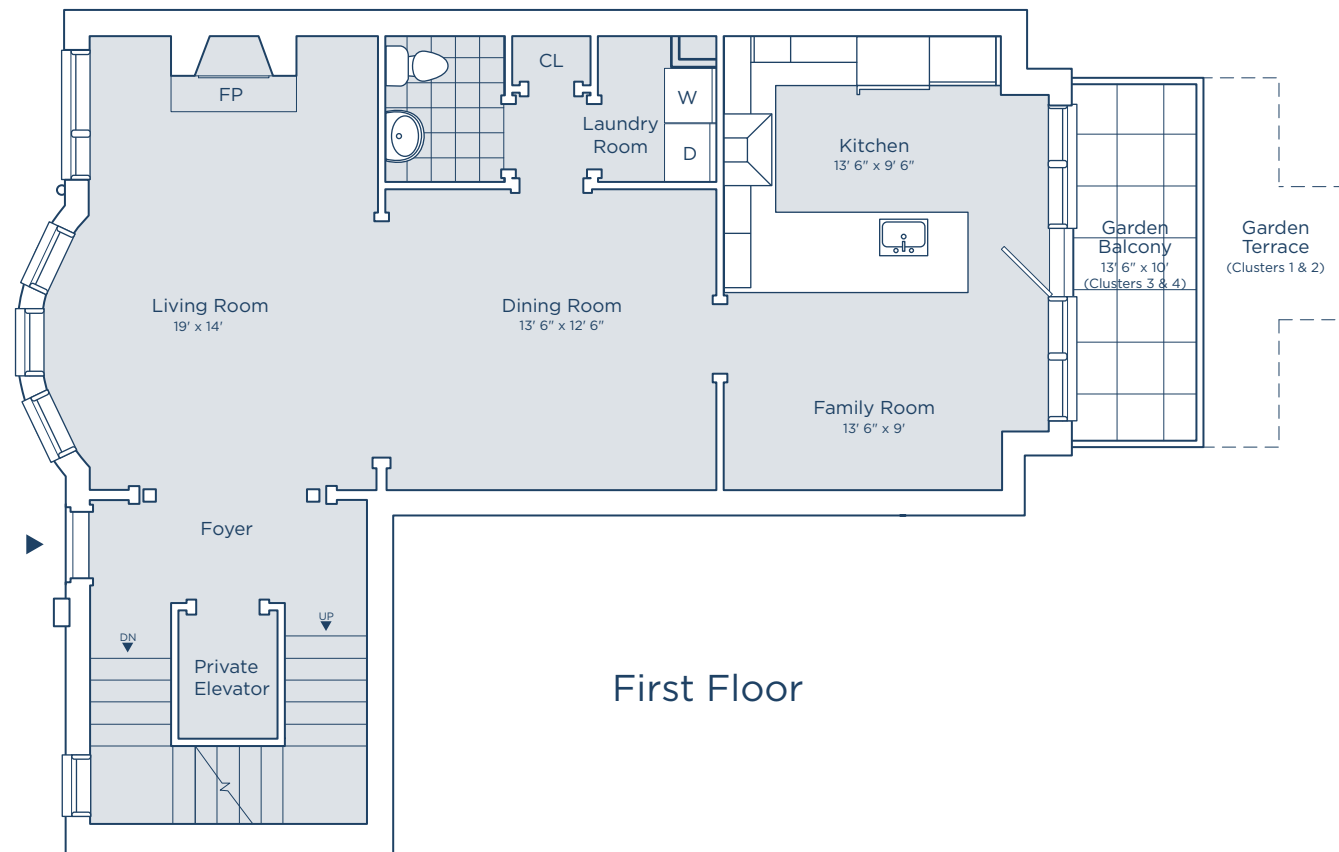
- Private Elevator
- Fireplace
- Gourmet Kitchen with Granite Countertops and Viking Appliances
- Terrace
- Garden Balcony with Gas Line
- Sitting Area
- Den
- Smart Home Technology
- Hardwood Floors Throughout
- Crown Molding on Main Living Level and in Master Bedroom
- Recessed Lighting on Main Living Level and in Master Bedroom



Hudson River



Ground Floor



First Floor

SCALE: 1/8" = 1'



1 of 2

Floor plans and renderings are artist's concept. Prices, terms, dimensions, square footage and features are approximate and subject to change without notice. All information included herein is approximate and subject to change. Developer reserves the right to make modifications, changes or additions to all plans and designs. Builder may substitute certain products or items as it deems appropriate, from time to time. All drawings are artist's conception. In deciding to purchase a home, purchasers agree to rely only on the final contract document and not on any information contained herein. Site plan is for illustrative purposes only. Building locations, roadways, landscaping and parking configurations may change as construction progresses. Windows shown on floor plans may differ by location and floor level.

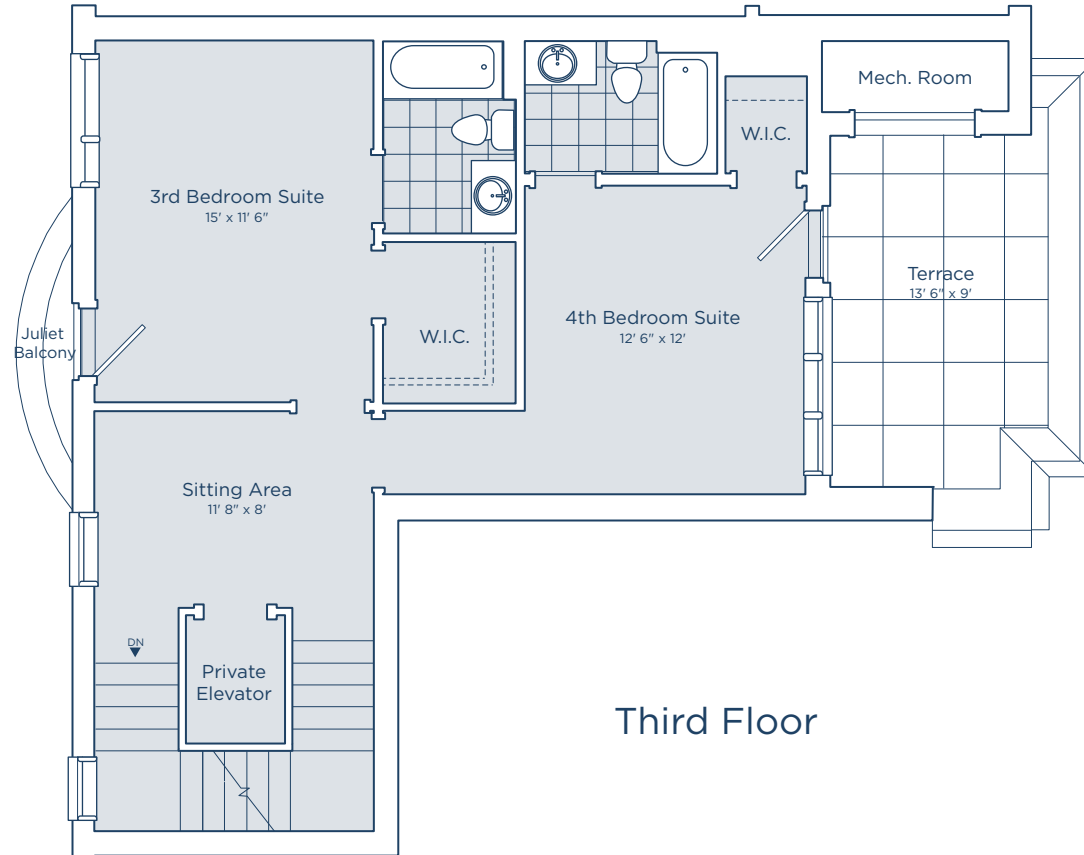
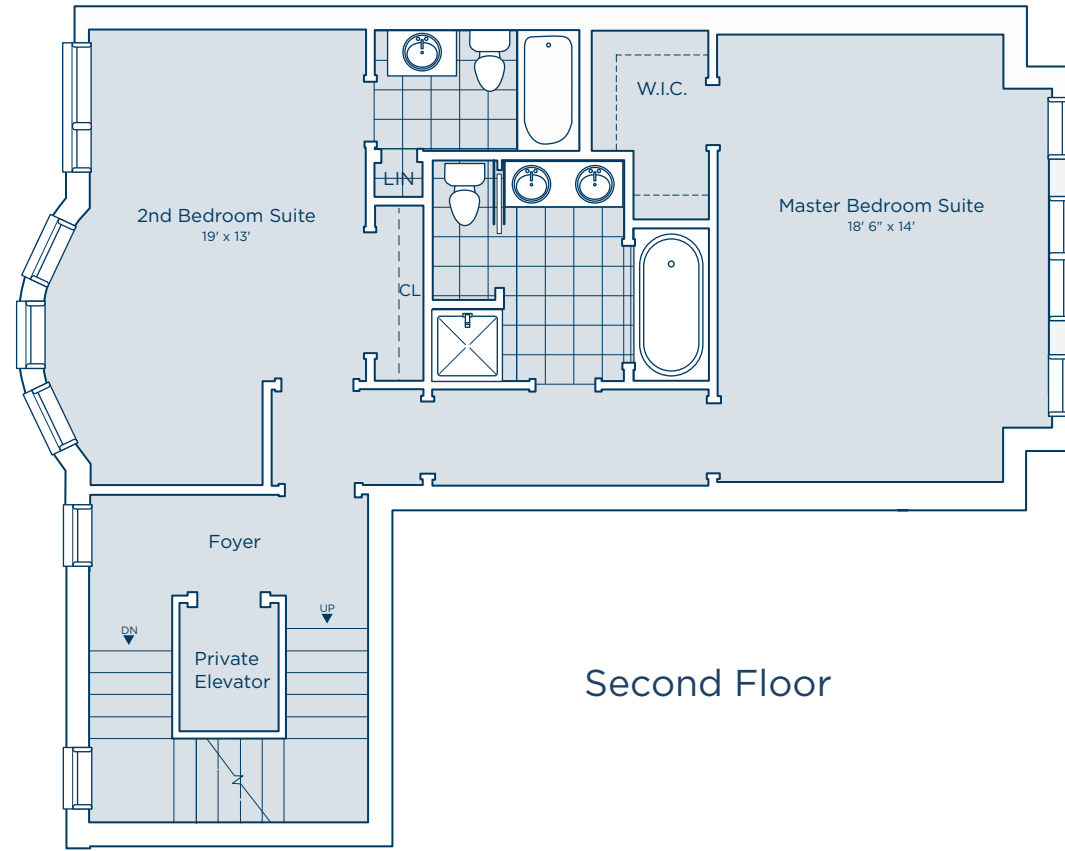


HENLEY ON HUDSON

AT PORT IMPERIAL
WEEHAWKEN, NEW JERSEY

TOWNHOME

Second & Third Floors



SCALE: 1/8" = 1'



2 of 2

Floor plans and renderings are artist's concept. Prices, terms, dimensions, square footage and features are approximate and subject to change without notice. All information included herein is approximate and subject to change. Developer reserves the right to make modifications, changes or additions to all plans and designs. Builder may substitute certain products or items as it deems appropriate, from time to time. All drawings are artist's conception. In deciding to purchase a home, purchasers agree to rely only on the final contract document and not on any information contained herein. Site plan is for illustrative purposes only. Building locations, roadways, landscaping and parking configurations may change as construction progresses. Windows shown on floor plans may differ by location and floor level.